



## Paladin<sup>+</sup>

With IED components & construction becoming smaller and more sophisticated, Vidisco's Paladin utilizes a low dead space, high-definition, lightweight, and a rugged panel design that is crucial when developing a render-safe procedure confidently



\*Picture for illustration purposes only, different configurations available



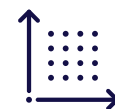
### IP67 rating

The world's first dust and water proof system designed for harsh field conditions.



### "Hot-swappable" batteries\*

Two hot-swappable batteries for never-ending continuous operation in the field. \*Paladin 17 only  
Battery operation system from 8 hr to 16 hr



### High Resolution

Pixel pitch of 99 μm



### Multi-orientation handle

Detachable handle for portrait or landscape orientation.



### One-touch operation

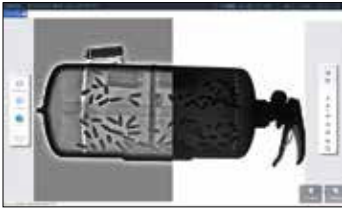
2-3 second time-lapse for image capture.



### Lightweight

From 1.4 kg to 2.5 kg

# VEO SOFTWARE



## Xsight

One touch filter capability



## Stitching

Automatic image stitching



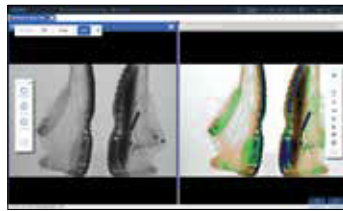
## Annotations

Annotations and image measurement options



## External Camera

Combines image with external camera



## Dual Energy

Differentiates organic and inorganic materials



## Subtraction

Compares two images, while highlighting the differences

System Specifications	Paladin 17	Paladin 12
Imaging area	36 cm x 43 cm (~14" x 17")	25 cm x 30 cm (~10" x 12")
Panel dimensions	384 mm x 460 mm (~15" x 18")	282.5 mm x 333.3 mm (~11" x 13")
Panel thickness	15 mm (0.6")	15 mm (0.6")
Panel weight	2.50 kg (including two batteries)	1.4 kg (including one battery)
IP rate	67	67
Pixel size	99 µm	99 µm
lp/mm	5	5
Panel bit	16 bit	16 bit
Panel dead space	2.8 mm (both sides)	2.8 mm (both sides)
Wireless	Up to 1.6 km (1 mile) line of sight*	Up to 1.6 km (1 mile) line of sight*
Operating time	Up to 16 hours	Up to 8 hours
Packaging	Rugged case, Tactical backpack	Rugged case, Tactical backpack
Displays	Laptop, Tablet (Different sizes available)	Laptop, Tablet (Different sizes available)
Software features	Xsight filter; Stitching; Subtraction; Summation	Xsight filter; Stitching; Subtraction; Summation
Accessories	Robot integration; Slider; Dual Energy & more	Robot integration; Slider; Dual Energy & more

All specifications subject to change

\* To reach above 500m wireless (line of sight), Repeaters are required.

Field conditions/interference might affect wireless results.